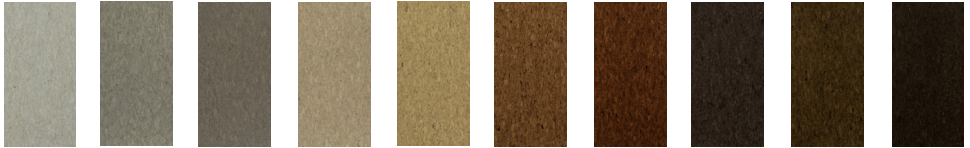


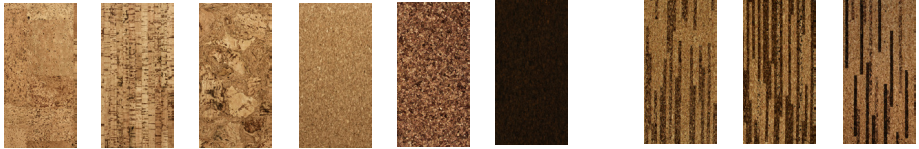
Mediterra 2.0

gluedown cork tile



Sea Salt, Platinum, Anchor, Taupe, Maize, Acorn, Chestnut, Olive, Tea Leaves, Rapids

Colours Standard size: 12" x 24" x 3/16"



Blocks, Cable, Tumbled, Light, Medium, Dark

Standard sizes 3/16": 12" x 12" & 12 x 24"

Pickup Strips Light, Jumble, Small Strips

Standard size: 12 x 24" x 3/16"

Standard size(s): 1 carton minimum per color. Non-standard tile sizes 24" x 24", 5.91" x 23.64", 11.81" x 35.43" & non-standard 5/16" thickness also available. Lead time & 1080 sf minimum per color/pattern will apply

Cork tiles qualify for purchase under the Buy American Act

- Mediterra 2.0 comes prefinished with 5 coats of Capri's TLP+ proprietary finish; no need for additional coats
- Cork is a natural material; shade variations are inherent
- As with all natural wood, cork needs to be protected from UV rays
- All cork patterns are random and not intended to match or line up
- Mediterra 2.0 colors/patterns are available on Capri's Eco-Clicks Cork Floating Floor; lead time & 1080 sf minimum per color/pattern will apply



Declare.



Mediterra 2.0 gluedown cork tile



Cork is a naturally versatile, durable, sound reducing, insulating, antimicrobial & anti-fungal rapidly renewable raw material.

Grown in the Mediterranean Basin, the cork oak tree, *Quercus Suber*, has a life span of over 200 years. The tree produces bark that when removed/harvested will not damage the tree. The bark regenerates itself within 9 year cycles.

Cork has a unique closed cell structure that does not easily absorb liquid, in fact, cork floats. This characteristic is what enables cork to compress and recover easily so it is comfortable and soft under foot. Due to the cell structure, cork is 50% air by volume making cork an excellent sound and thermal insulator. Mediterra 2.0 cork tiles have a NRC rating of 0.05 and an R value of 0.7- 1.01.

Capri has ASTM E2180 test results that confirm that cork tile will not contribute to the growth and reproduction of bacteria and will actually aide in the destruction of bacteria over a 24 hour period.

Additionally, Capri has ASTM G21 test results that confirm after 4 weeks there were only trace levels of fungal growth on our cork tile which was so minimal it was only visible under a microscope.

For more complete information about the amazing cork tree and Capri's ASTM test results refer to our *Unique Properties of Cork* Tech Bulletin: <https://www.capricollections.com/document-library/technical-bulletins/>.