

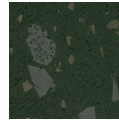
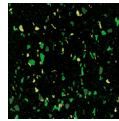
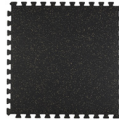
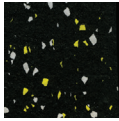
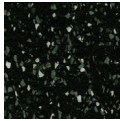
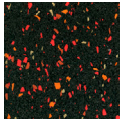
Capri
collections

Capri Fitness & Rec



Maple Plaza • Gensler LA

Capri Fitness & Rec: re-tire recycled rubber



Suitable for a variety of fitness and recreational areas, USA Made Re-Tire is made with post-consumer SBR tire waste and EPDM rubber.

Rolls: 4' wide • Tiles: 36" x 36", 24" x 24" & 12" x 24" • Interlocking tiles (8 mm or greater): 36" x 36", 24" x 24"
Thicknesses: 3.2, 4, 6, 8, 9, 12 mm

In fitness areas with free weights 8 mm or greater thickness is required

Stationary equipment including spinning bikes: 6 mm or greater

Areas where spikes or cleats are worn: 9 mm or greater required with no finish applied

Re-Tire is FloorScore certified and Declare Label Status LBC Red List Free



Declare.

VERIFIED BY
UL GREENGUARD
GLOBAL SERVICES

With recycled content, variations are possible. Skive/knife marks are inherent in the manufacturing process. Site applied finish coats on Fitness & Rec are optional.



Fitness & Rec • Balthus Gym

sales@capricollections.com • 800.492.2613 • capricollections.com