





# Eco-Clicks Cork

## floating floor



Channel White ECC3570



Gray Wash ECC3580



Billows Ore ECC3585



Billows Ash ECC3545



Billows Current ECC3590



Plateau ECC3501



Rugged ECC3505



Tumbled ECC3530



Blocks ECC3560



Cable ECC3555



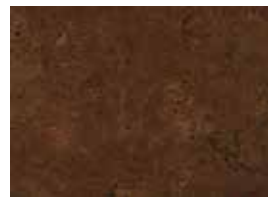
Channel ECC3565



Billows Brown ECC3540



Broken Lines ECC3575



Chestnut ECC3550



Sable ECC3595

Made from the bark of the cork oak tree, cork is natural, durable, quiet and comfortable. Eco-Clicks Cork offers unique cork patterns/colors on a glue-less interlocking flooring system. Created in 3 layers, the top layer is 3mm pre-finished\* cork, the middle layer is 6mm formaldehyde free HDF board and the bottom layer is 1.5mm cork underlayment. \*Pre-finished with 5 coats of Capri's proprietary TLP+ finish; no additional coats are required.

Plank size is 12" x 36" (nominal) x 10.5 mm. Many Eco-Clicks cork colors/patterns can be made in glue down tiles. Please inquire. All patterns are random and not intended to match or line up. Like all natural wood, cork has shade variations; attention to blending shades when installing is necessary. UV rays will fade natural wood including cork.

Floating floors are suitable for use in many commercial areas and can be installed on, below or above grade over a variety of substrates. As the name implies, floating floors "float" as a unit with expansion spaces necessary. Floating floors do not require adhesive which allows for immediate usage after installation. Capri offers coordinating accessories to be used with Eco-Clicks cork.

