

Enhance interior vertical surfaces with wall tiles made with natural cork bark. Utilizing cut bark pieces, 1860 tiles offer three distinctive patterns: Stacked, Inside, and Outside. The Stacked patterns are created by cutting the bark in strips and placing them in stacked rows. The Inside and Outside patterns simply are what they are. The Inside patterns are made with the inner side of the bark that covers the tree trunk. For the Outside patterns, we flipped the inner bark over to showcase what the outer bark looks like on the tree. The Inside and Outside variations are all about what the cork tree gives us.



Ask us about FSC® certified cork

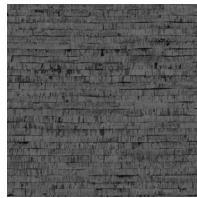
Stacked cork:



Natural VASC001



White VASC002



Titanium VASC003

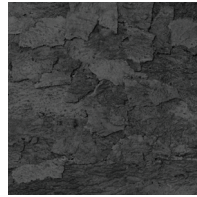
Inside cork:



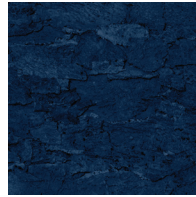
Timber VAIC001



Chalk VAIC002



Zinc VAIC003

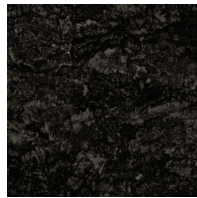


True Blue VAIC004

Outside cork:



Hewn VAOC001



Jet VAOC002

With both natural bark and stained colors, the 1860 tile size is nominal 24" x 36". Since the bark is in its natural organic form, 1860 tiles are uniquely created with the textures, dimensions and shades the bark provides. 1860 tiles are not intended to match or line up; variations from tile to tile are inherent. 1860 tiles are ASTM E84 rated. UV rays can fade cork. Proper window UV films shall be used to diminish this effect.

Cork is a naturally versatile, durable, insulating, antimicrobial & anti-fungal rapidly renewable raw material.

800.492.2613 • capricollections.com

